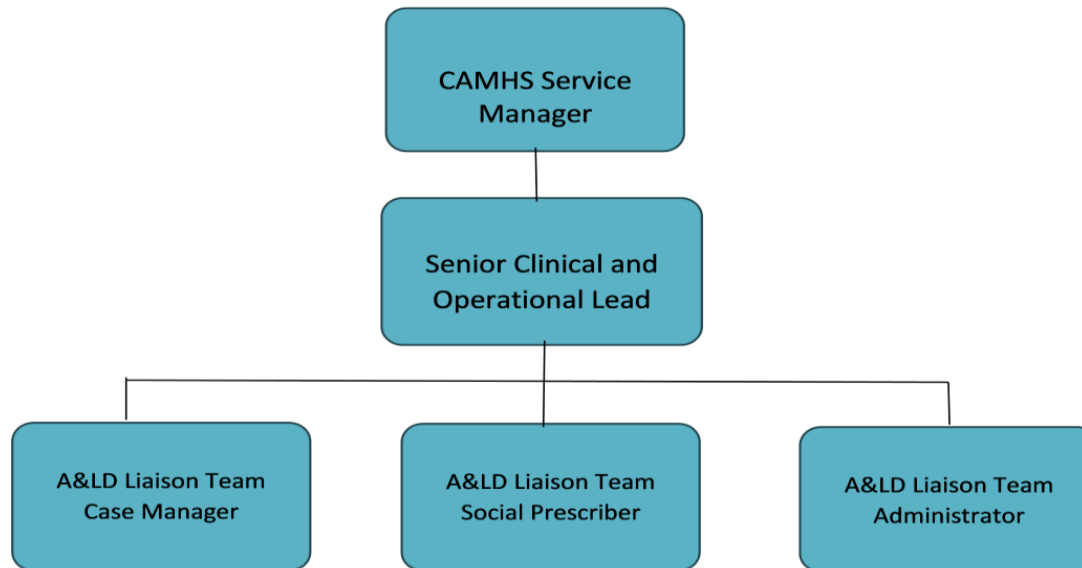


Autism and Learning Disabilities Liaison Team

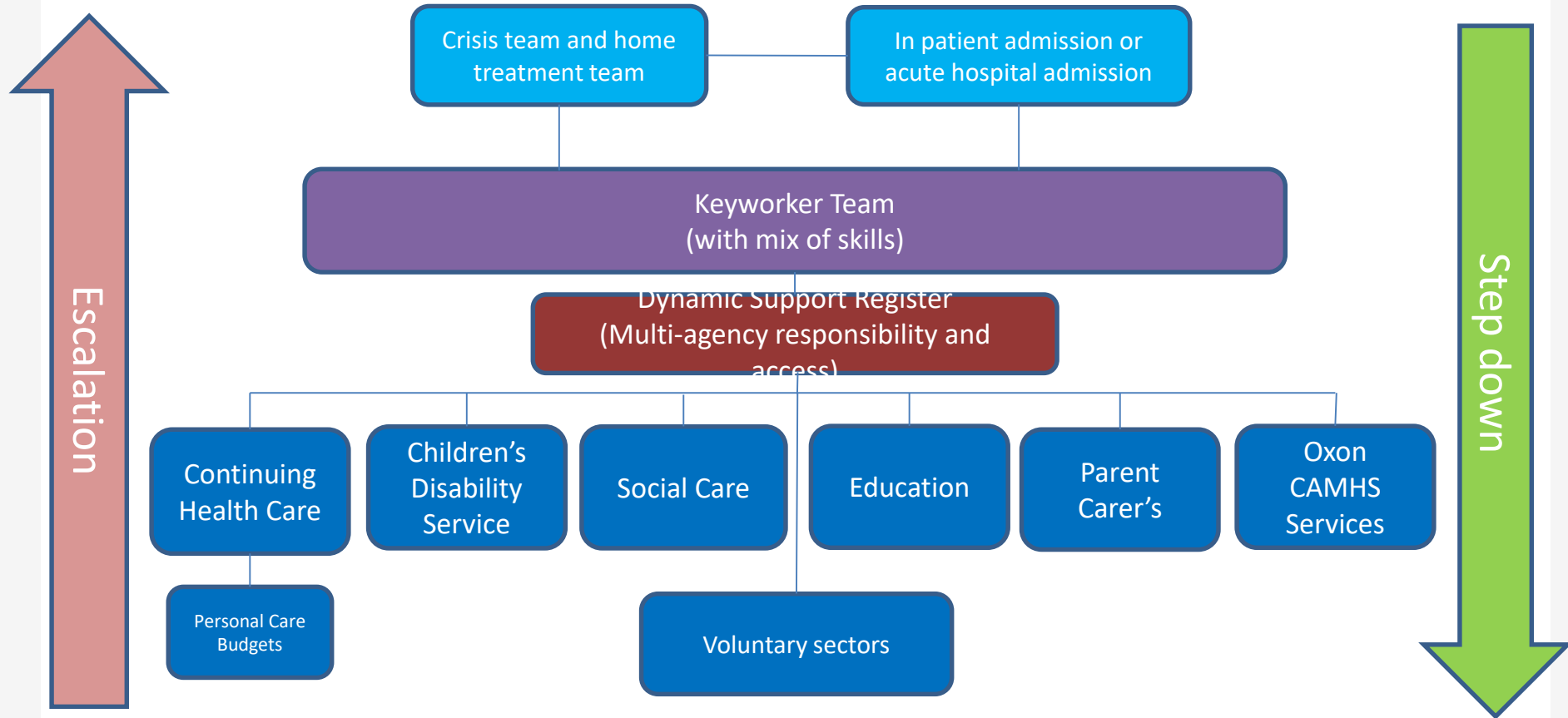


*Delivering keyworking in Oxfordshire, for children
and young people up to 18 years old*

Team Structure



Oxfordshire Keyworker Pilot – Approach to multi-agency working



Innovations and successes

Future proofing
young people's
progress and
services

DSR / Risk rating
reflects multiagency
component and is
consistently applied

Personal Health
Budgets in Mental
Health

Use of social
prescribing

Recovery star to
measure outcomes
of the different and
holistic interventions

Significant reduction
of inpatient
admissions, with NO
inpatients in Q1 22

Innovations and successes

Influencing systems

Commissioning (e.g.
working on bids)

Social care (supporting
with better systems to
match YP to
placements)

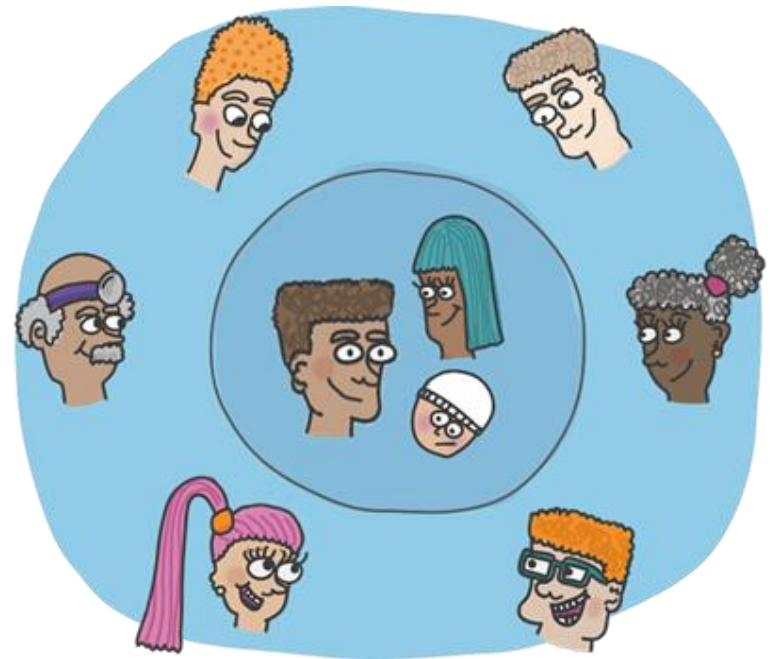
CAMHS (identifying
areas for staffing
development)

Governance and
accountability systems
where patient voices
are at the centre

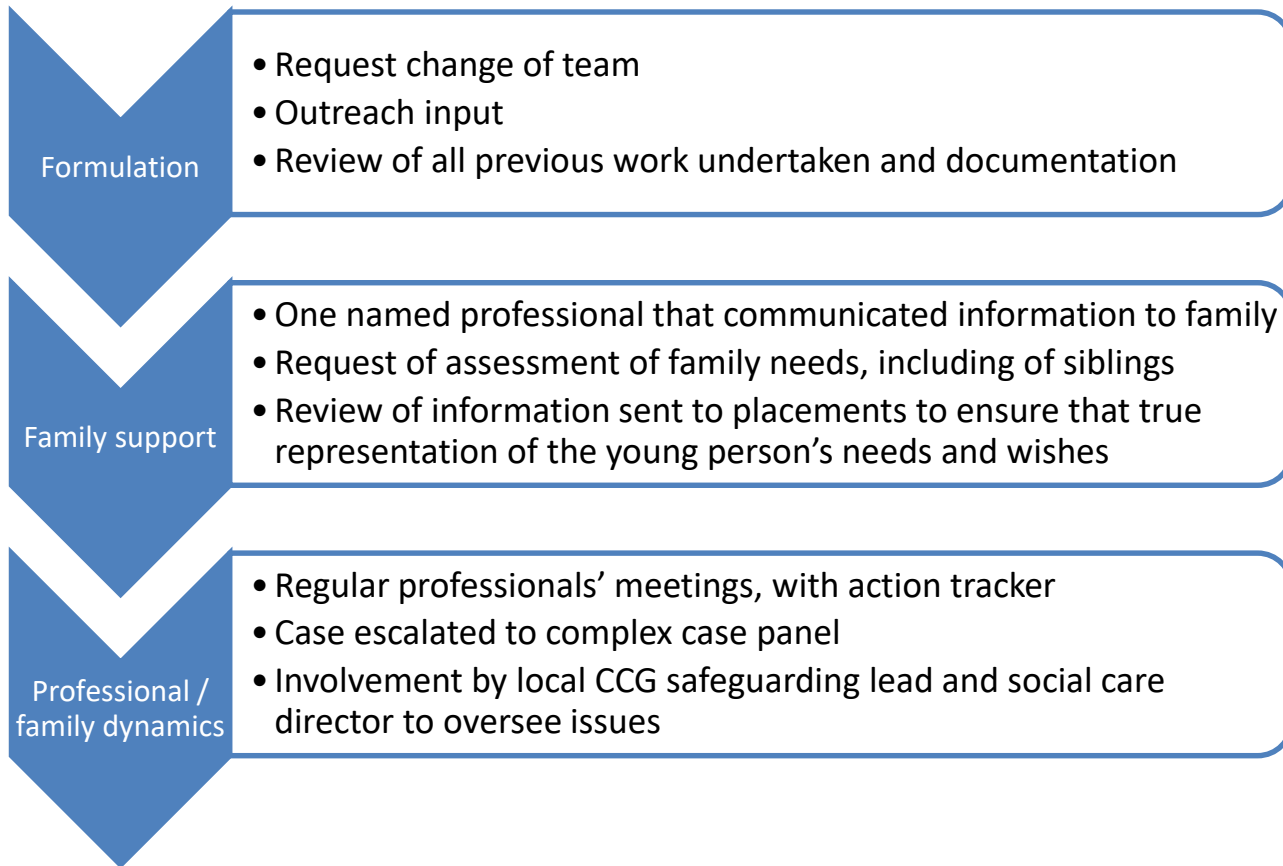
Case study

Background

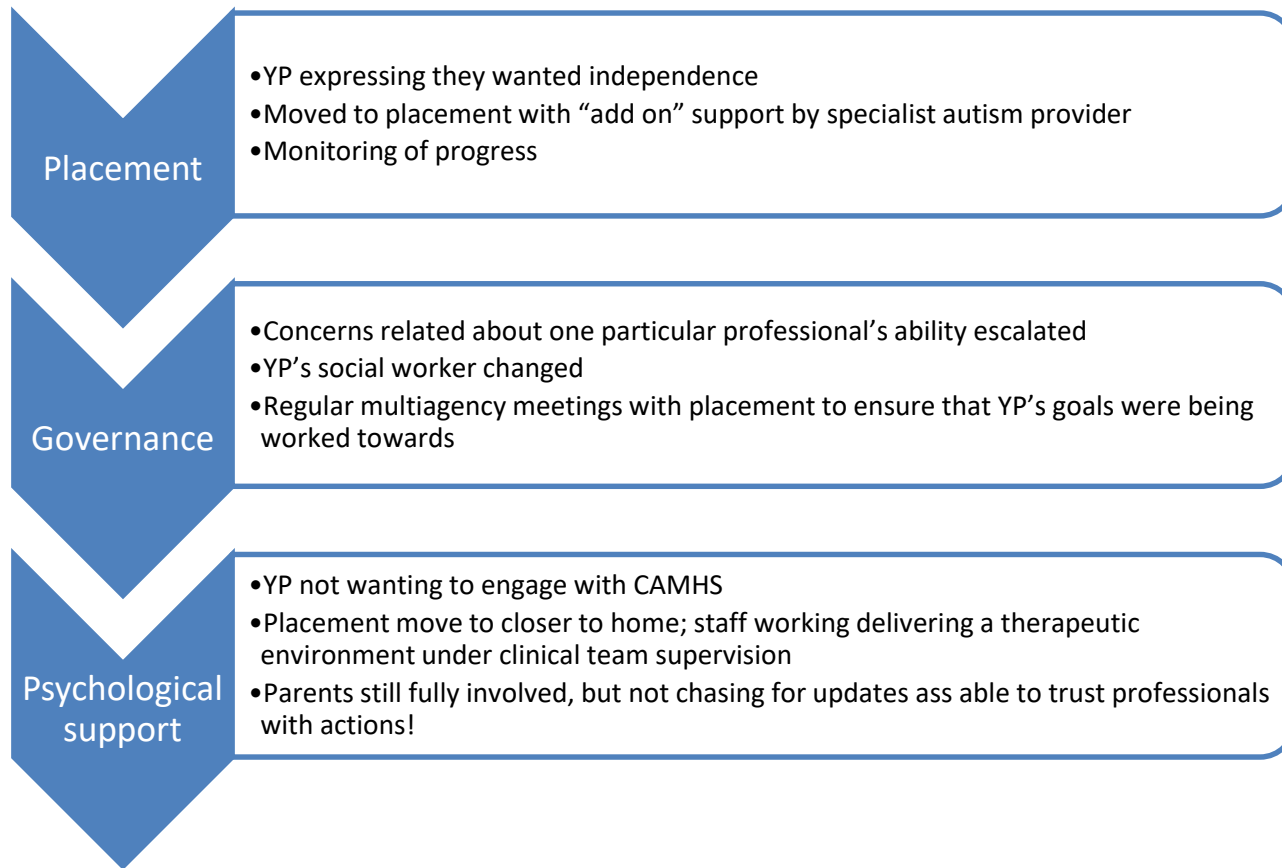
- 14 years old girl, confirmed as autistic at age 8; history of inpatient admission, for eating disorder, deliberate self-harm, and risky behaviour such as fire setting
- Specialist school breakdown, and return home; no new placement identified despite extensive search
- Mum had stopped working to support; other children at home, also with NDC's
- Despite involvement from CAMHS, social care, and education, there was no clear strategy or long term vision; system "stuck"



Immediate actions



Planning long term



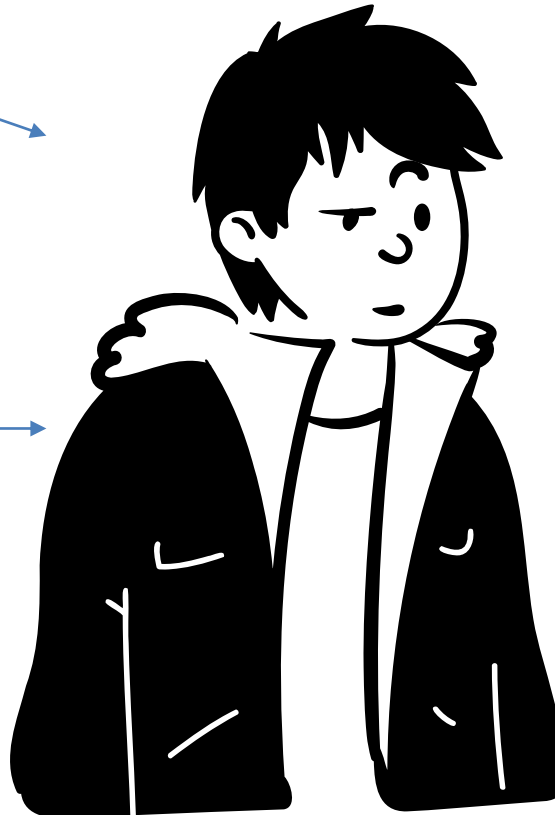
Where are we now!!!

Started
College!!!

YP came out
as transgender

Sleep regular
and eating in
front of others

Seeing friends,
travelling
independently



Parents
parenting
rather than
caring!

Mum has gone back
to work, and often
texts saying that all
is ok and doesn't
need updates!