



# Our learning & support offer

 **COUNCIL  
FOR DISABLED  
CHILDREN**

**UNITED FOR DISABLED CHILDREN**

# Why choose the Council for Disabled Children?

The Council for Disabled Children's Learning and Support team brings a **wealth of SEND expertise**, together with high levels of skill in training and facilitation to help our clients strengthen relationships, build skills and knowledge, and effectively address challenges. We take a supportive, non-judgemental approach which combines a welcoming atmosphere, friendly facilitators and a focus on solutions.

Our perspective as a **national charity** means we draw on good practice from local areas across the country, as well as having strong relationships with national bodies (e.g. the Department for Education and NHS England), with whom we share intelligence on common challenges and opportunities for improvement at the national level.

Many of our facilitators bring **first-hand experience** of working with disabled children and young people and children and young people with special educational needs and their families, or as leaders in the sector, ensuring that we keep the family experience at the heart of our work.

Unlike other consultancy firms, any **surplus remains within the organisation** to fund our research, children and young people's engagement, resource development and other work related to improving the lives of vulnerable children and young people.

## START A CONVERSATION

It takes just one conversation to start your learning and support journey with the Council for Disabled Children. Contact a member of our team and they will discuss with you:

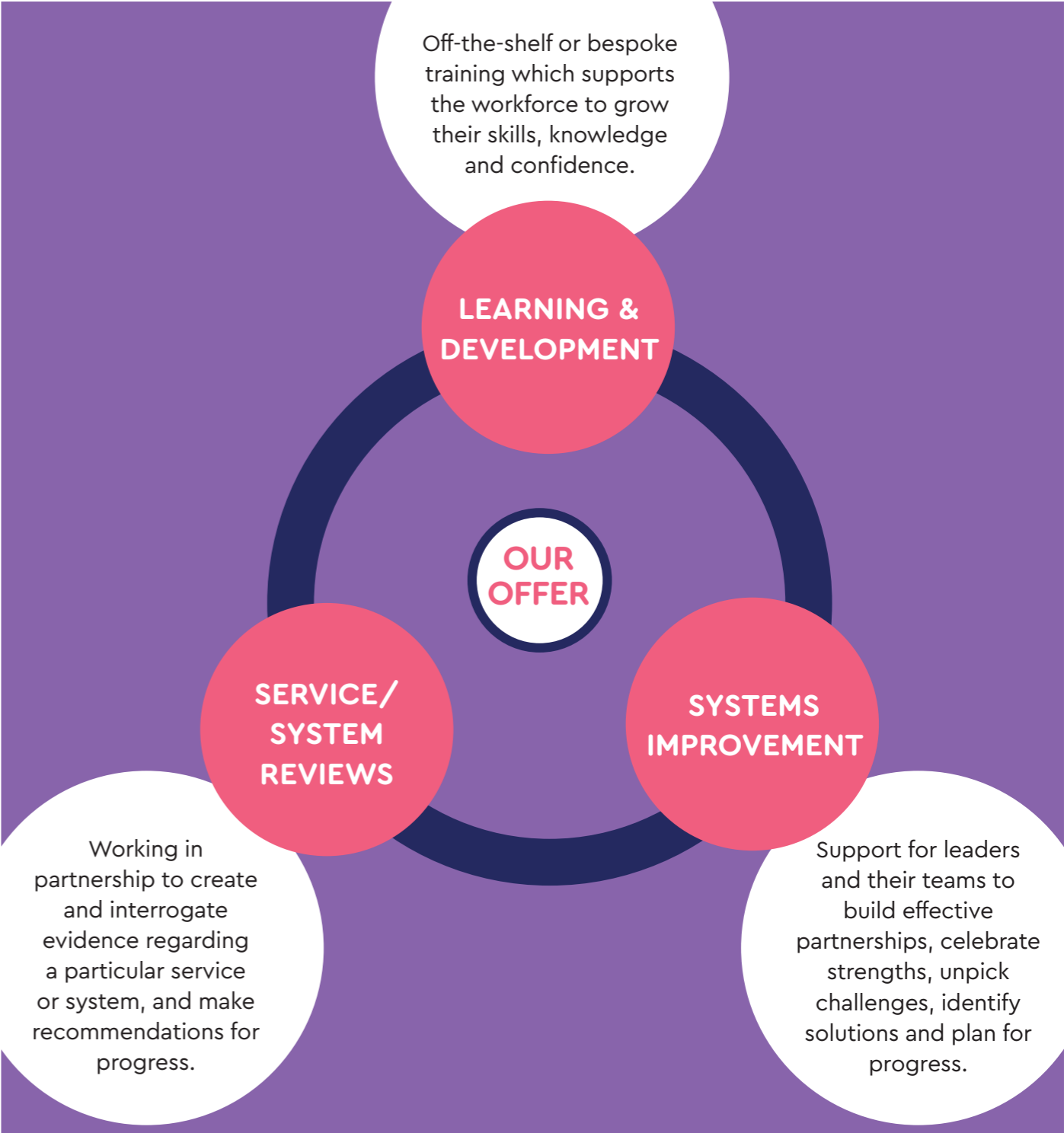
- The **local context**, including strengths, challenges and local improvement work
- The **particular challenge** and what you feel would help to make progress
- The **objectives** for the piece of work
- Key **stakeholders** to involve, to ensure success
- The **budget**

They will then develop a bespoke proposal and quote for you to discuss with your colleagues before committing to the work.

To start your learning and support journey with us  
contact [rethink@ncb.org.uk](mailto:rethink@ncb.org.uk)

# Our offer

Our **wide-ranging expertise and flexible approach** means that we will always work with you to identify the most appropriate support for the challenges that you and your partners face. That may include one or more of the following methods:





## Learning & development

We provide **engaging, motivating training** to the workforce to help teams to increase their understanding of policy and good practice, and to feel more confident in carrying out their roles.

Our learning & development activities are always **interactive, discussion-based and brought to life** with case studies and examples.

### This might include:

- Development of e-learning
- Delivery of existing training modules, online or in-person
- Adaption of existing training modules for the local context
- Development of new training modules
- Train the trainer

### Example topics include:

Education, Health and Care Plans  
Co-production  
Difficult Conversations  
The Equality Act 2010

Prices vary depending on duration, number of attendees, online/ in-person and level of adaptation required. Please discuss your requirements with a member of the team for a quote.

“ CDC are fab and always provide quality, helpful and enjoyable support which is really appreciated. ”

“ The practical approach to learning was highly beneficial, and the team’s dedication to ensuring each participant’s understanding and growth was evident. ”

# Systems Improvement

We work in close collaboration with senior leaders and their partners to develop bespoke interventions which get to the heart of the sector’s most challenging issues.

We can support you to:

- Strengthen relationships between partners
- Develop buy-in for improvement work
- Understand current strengths and challenges from different perspectives
- Learn from good practice examples
- Make recommendations for improvements
- Collaboratively develop a way forward
- Monitor and evaluate progress

This might include:

- Desk research and analysis
- Interviews and focus groups
- Facilitated conversations
- Facilitation of task & finish groups
- Large-scale workshops
- Reports and recommendations

Example topics include:

- Developing strategic outcomes
- Developing strategies and workplans
- Making meaningful use of data
- Mapping the provision landscape



Cost depends on duration of support, number and type of interventions, and complexity of the issue at hand. Please discuss your requirements with a member of the team for a quote.

“ The team were always excellent and listening to our feedback, adapting (often quickly), as well as ensuring we keep focused on what you know works in this area. ”

“ You did an excellent job of managing what could have been a very difficult conversation. I was very grateful for the way you led and managed the whole session. ”

CASE STUDY

Rochdale Integrated SEND Alliance

The challenge:

Different parts of the SEND System in Rochdale were working in siloes, without a clear picture of the collective impact their work was having.

Who was involved?

- Rochdale Borough Council
- NHS Heywood, Middleton and Rochdale Clinical Commissioning Group
- Rochdale Parent Carers Voice

What support did we provide?

- We worked with the local partnership to:
- Design and facilitate a SEND functions assurance process
  - Develop strategic outcomes and corresponding data indicators
  - Map early intervention services for SEND
  - Develop a SEND Joint Strategic Needs Assessment
  - Develop an Ordinarily Available Provision framework

The result

Rochdale created a multi-agency alliance to improve support and outcomes for 5,913 children and young people who require SEND support. There is now a shared vision, backed by a strong information sharing system, meaning that:

- Partners can identify patterns in early intervention support needs and gaps in provision
- More children are receiving early intervention and support
- More professionals are accessing training
- Autism diagnosis and support waiting times have reduced
- The Raising Rochdale SEND Team won the Public Sector Children’s Team Award at the Children & Young People Now Awards 2022

System/service reviews

We take a systematic approach to understanding the current context of a particular service or system, in order to identify areas for improvement. We can help you to:

- Review and summarise existing research
- Understand the national context and what this means for your system/service
- Understand current strengths and challenges from different perspectives
- Make recommendations for improvements



#### This might include:

- Literature reviews
- Quantitative analysis of existing local or national data sets
- Interviews, focus groups, and surveys
- Qualitative analysis of responses
- Reports and recommendations

#### Example topics include:

Youth Justice services  
Neurodevelopmental pathways  
Therapy services  
Ordinarily Available Provision

Cost depends on depth, complexity and scale of research required.  
Please discuss your requirements with a member of the team for a quote.

“ I don’t think we could have begun the positive shift we’ve started without your partnership. ”

“ Thank you to you and your team for 3 fantastic workshops that have been thought provoking, fostered an enthusiasm for this work, and very helpfully pointed us in the direction we now need to take. ”

## CASE STUDY

### Review of Oxfordshire SENDIASS Service

#### The challenge:

Oxfordshire County Council was unclear how the local SENDIASS service was performing against the statutory requirements and Minimum Standards, and what improvements could be made.

#### Who was involved?

- Staff and volunteers at SENDIASS Oxfordshire
- Staff at Oxfordshire County Council
- Staff from local schools and settings
- Staff from local health providers
- Parent Carer Forum chair and members
- Children and young people

#### What did we do?

- Analysed local and national data sets to understand the quantity and quality of delivery
- Benchmarked data against statistical neighbours
- Conducted interviews with practitioners, staff, children & young people, and parent carers
- Convened a multi-stakeholder workshop to review the findings and make recommendations.
- Wrote a final report

#### The result

Local leaders were able to use the findings to develop a business case to increase staffing in the service, thereby providing further support to children, young people and families.



To start your learning and support journey with us  
contact [rethink@ncb.org.uk](mailto:rethink@ncb.org.uk)

## United for a better childhood

The National Children's Bureau brings people and organisations together to drive change in society and deliver a better childhood for the UK. We interrogate policy, uncover evidence and develop better ways of supporting children and families.

Let's work together: 020 7843 6000 [info@ncb.org.uk](mailto:info@ncb.org.uk)

London: 23 Mentmore Terrace, London, E8 3PN

Belfast: The NICVA Building, 61 Duncairn Gardens, BT15 2GB



**COUNCIL  
FOR DISABLED  
CHILDREN**

**NATIONAL  
CHILDREN'S  
BUREAU**

Part of the family

National Children's Bureau is registered charity number 258825 and a company limited by guarantee number 00952717. Registered office: 23 Mentmore Terrace, London E8 3PN.